

500W Xenon Light Source

—GLORIA-X500A

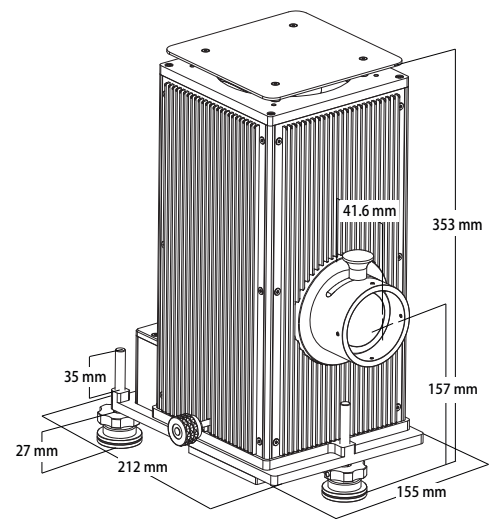
C500W Arc light housing expand to operates 350 W Xe and 500 W Hg(Xe) arc lamps under optimal and for these lamps necessary conditions. Switching between the lamps only requires changing the lamp adapter to position the lamp in the center of the housing.



- Spectral range from UV to VIS(200-2500nm)
- Optical axis height is 157-193mm
- A spherical reflector collects the output from the rear of the lamp and focuses it on or near the arc, for collection by the condenser.
- The output is increased by as much as 60 %
- Output beam diameter is 46mm
- Typical light ripple of our arc light sources is less than 1%.
- Supports wide range of accessories
- Fan cooled housing

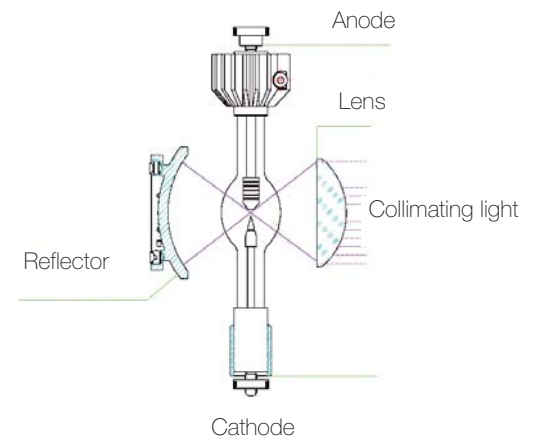
Xe arc lamp Light sources are the preferred artificial sources to simulate sunlight. The high color temperature(6000K) of the Xenon lamps is a close match to the solar temperature. This results in very similar solar spectra in the UV and VIS although the source has some Xe emissions lines in the near IR.

35mm137mm Application for luorescence, Luminescence and Phosphorescence,Absorbance and Reflectance,Photochemistry,Photolithography, Detection of optical Schlieren,Solar simulation



Cooling

Proper cooling is essential for correct lamp operation. The bulb temperature of arc lamps should not exceed 600 - 900°C, because at higher temperatures the bulb is not able to withstand the high gas pressure due to a temperature-related change of the quartz structure (recrystallization). Because of potential current conductor oxidation, the socket temperature must not exceed 230°C.



Output beam

500W Xenon Light Source—GLORIA-X500A

Safety

Our lamp housings include safety features to prevent lamp damage and accidental exposure. A door interlock prohibits the operation of the lamp while the door is open. Overheating of the lamp caused by a defect is avoided by a thermal interlock which shuts down the power supply.

Ordering Information

To build a complete light source you will need:

Lamp housing, condensing optic, lamp with appropriate adapter, power supply, electrical interface and cable between lamp housing and power supply. As an option choose the rear reflector for more output.

Model	Description	Details
GLORIA-X500A	500W Xenon Light Source	500W Xenon Light Source(GLORIA-X500A) includes housing(LSH-X500A),power supply(LSPX500A) and Lamp (LSB-X500)

Lamp Sheet

Model	Power (W)	Current (A)	Voltage (V)	Luminous area(W x H)(mm)	Average life (h)	lamp size (Lx D) mm
LSB-GX500	500	25	20	1 × 2.7	1000	175 × 30
LSB-X500AOF	150	28	17	0.9 × 2.5	2000	190 × 35

Tips:

Xe and Hg(Xe) lamps are strong UV sources and emit dangerous levels of ultraviolet radiation. Exposure to UV,even for short periods, can cause severe skin and eye burns. Always wear protective eyewear and gloves or clothing, when working near these sources.

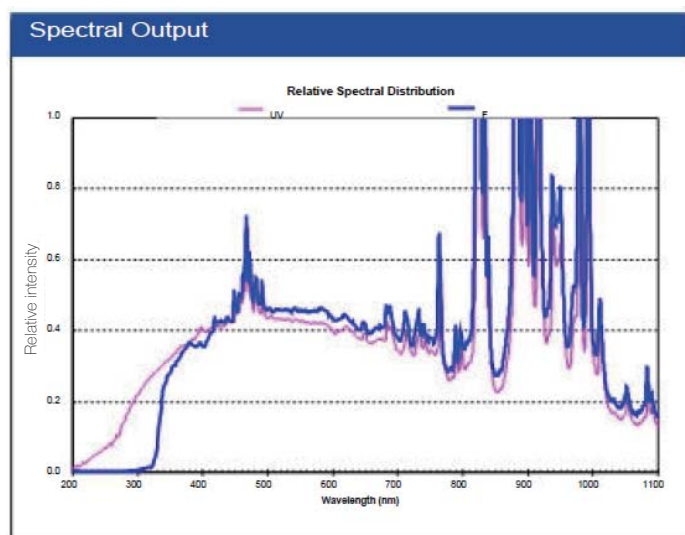
300W Photocatalysis Light Source

—Sirius-300P

- High effective parabolic condenser ensure high collimation and high energy output
- The light height can be adjustable according to customer' s requirement
- Light Source can be used as whole system or separately(housing and power supply can be divided into separate parts)
- The power supply can be turned off automatically by setting time
- High effective air-cooling has improved bulb lifetime
- High stability,unstability degree<1°



Sirius-300P series photocatalysis light source has high output from UV to NIR, Sirius-300P-F focus on simulated sunlight of visible light; Sirius-300P-UV has strong continuous output within 200-400nm and focus on applications of high UV requirements. Spectral curve as right picture:



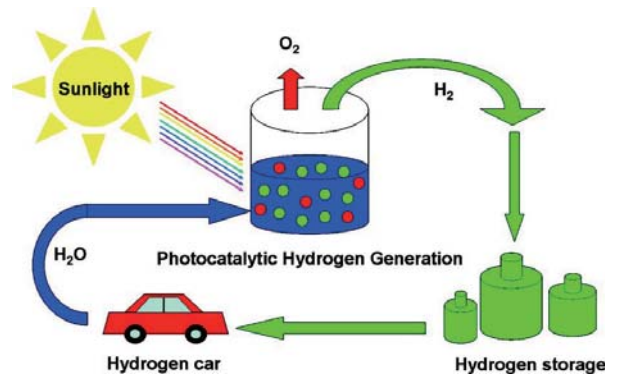
Specification

Parameters	Sirius300PX-F	Sirius300PX-UV
Power Supply Voltage	AC190~240V 50Hz FUSE~5A	AC190~240V 50Hz FUSE~5A
Rated Power	300W(180~320W)	300W(180W~320W)
Current	DC 21A(10A~22A)	DC 21A(10A~22A)
Voltage	DC 14V(13~16V)	DC 14V(13~16V)
Output Power	50W	50W
Spectral Range	320~2500nm	200~2500nm
Output Powe(UV)<390nm(Watts)	2.6W	6.6W
Output Powe(IR) >770nm(Watts)	28.8	26.8
Output Power(VIS) 390-770nm(Lumens)	5000Lu	4500Lu
Power Intensity	5~15 Sun@50mm	5~15 Sun@50mm
Color Temperature	5600K	5050K
Bean Diameter	Φ 30~70mm adjustable (@100mm from light output port)	Φ 30~70mm adjustable (@100mm from light output port)
Divergence Angle of Parallel Light	Average 5°	Average 5°
Center Height of Output Light	70-220mm adjustable	70-220mm adjustable
Bulb Life(Hours)	1000H to 6000H	1000H to 6000H
Size	341mmx244mmx290mm	341mmx244mmx290mm
Weight(Kg)	11Kg	11Kg

300W Photocatalysis Light Source

Application:

Photocatalysis, industrial catalysis, hydrogen aquatic photolysis, photochemical catalysis, photochemistry synthesis, optical degradation of pollutants, water pollution treatment, biological light, optical detection, various accelerated test simulated sunlight visible, ultraviolet band accelerated test and other research areas.



Safety Tips

Automatic power off after open the cover

The system will automatic power off if the cover of power supply/housing is opened by man-made,it ensure user's safety.

Overheating protection function

The system will automatic power off when the housing temperature over safety,ensure lamp will work within safe condition and prolong life.

Trigger protection function

The system will ban on lighting if light is not successful trigger for ten seconds .Avoid long time continuous frequent light caused damage of trigger and bulb.

Bulb life tips

Most electric energy transform to heat when the bulb output attenuation is too large,bulb explosion danger is exist. Sirius300P can check bulb condition and give tips for customer to change bulb when it is danger.

Light Source Accessories

Lens Holder



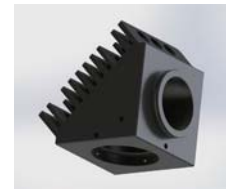
Filter Holder



Iris Diagramph



Beam Steering Components



Beam-Splitting Components



Light Path Sealing Components



Fiber Coupling Components

